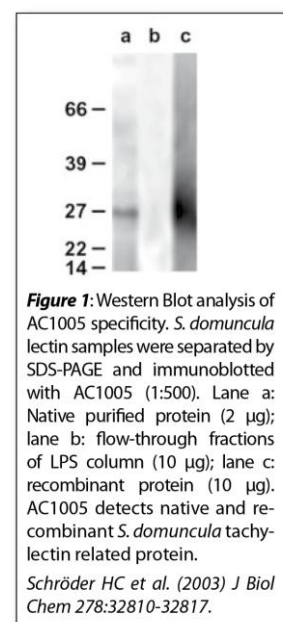


Data Sheet

TACHYLECTIN RELATED PROTEIN (*SUBERITES DOMUNCULA*)

ANTIBODY, POLYCLONAL

Catalog no.:	AC1005.1 / AC1005.2
Immunogen:	Recombinant tachylectin related protein from <i>Suberites domuncula</i>
Synonyms:	Galactose-binding protein
Swiss-Prot No:	Q70SU6
Gene Information:	Gene Name: gbp
Host:	Rabbit
Matrix:	Serum
Specificity:	Lectins, tested against following species: <i>Suberites domuncula</i>
Contents:	20 µl / 100 µl (lyophilized) Resuspend in 20 µl / 100 µl aqua bidest.
Known applications:	ELISA (1:500) ¹ , Western Blot (1:500) ¹ , immunohistochemistry (1:50), immunoprecipitation This antibody has not been tested for use in all applications. This does not necessarily exclude its use for non-tested procedures. The stated dilutions are recommendations only. We suggest that the applicant titrates the antibody in his/her system using appropriate negative/positive controls.
Store at:	2-8 °C (lyophilized); - 20 °C (dissolved) Repeated thawing and freezing must be avoided
References:	1 Schröder HC, Ushijima H, Krasko A, Gamulin V, Thakur NL, Diehl-Seifert B, Müller IM, Müller WEG (2003). Emergence and Disappearance of an Immune Molecule, an Antimicrobial Lectin, in Basal Metazoa - a tachylectin-related protein in the sponge <i>Suberites domuncula</i> . <i>J. Biol. Chem.</i> 278 :32810-32817.
Last updated on:	11 August 2016



For research use only

Publishing research using AC1005? Please let us know so that we can cite your publication as a reference.

